

Modular three-phase UPS

ATP DM

Power: 10 - 50KVA

Input voltage: 208 / 220 VAC

Output voltage: 208 / 220 VAC



DM Modular Online UPS is a rack mounted series, high space-saving product for small and medium data center. It has 20kVA, 30kVA, 50kVA can be chosen, The power module is 2U height, compatible with 19" standard rack cabinet.

The UPS can be configured to 3:1, 3:1 and 1:1. Meet the requirements and standards of products in 208V & 120V.

ATP DM Features

Rack modular design

- Modular design, compatible with 19" standard rack cabinet, convenient to be integrated into server cabinet.

High power density

- 10kVA power module in 2U height, saving great amount of space, easy for capacity expansion

Integrated solution for data center

- UPS can be integrated with battery cabinet, PDU and external maintenance bypass, offering excellent choice for data center

Smart sleep function

- System can intelligently shut down some power modules to increase total load rate, achieving higher efficiency

Self-aging mode

- Energy internal circle technology, system can run with full load, saving more than 90% energy

Friendly interface

- 7" touch color LCD with graphic display, more information displayed and easier for customer to operate

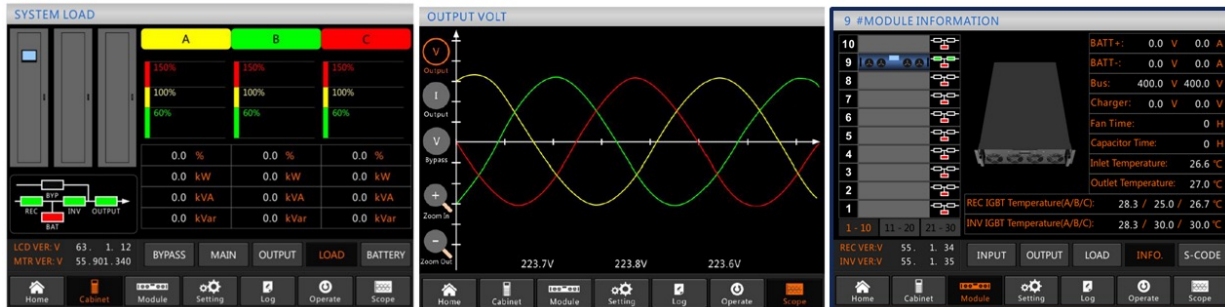
Intelligent charging management

- The system intelligently control the whole process of the charging and discharging, effectively improving the life time of the battery



Friendly Interface

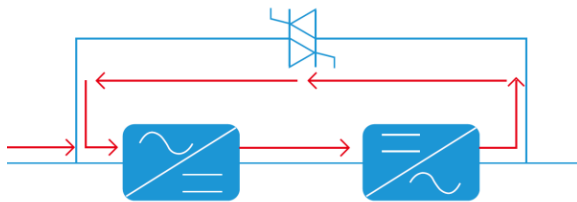
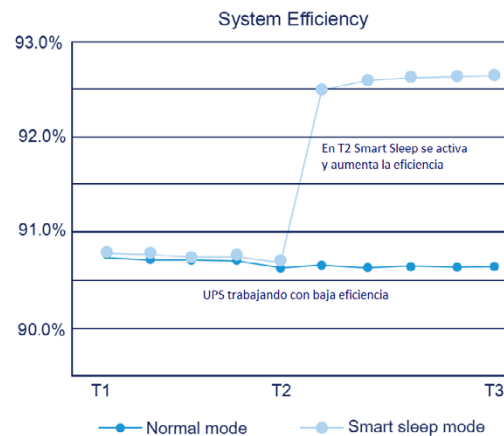
- It's 7" LCD display, shows information on the status of the UPS, input and output electrical parameters, charge percentage and backup time of the UPS system. Provide graphical and text based information of alarms, status data, instructions that users can have more friendly and safer operation.
- Allows the selection of operating modes and configuration of equipment operating parameters.



Smart Sleep

Smart Sleep function can intelligently make some power modules go to sleep when load is relatively low, improving the efficiency of the remaining power modules and saving customers on power and cooling costs.

- Improving efficiency, reducing power and cooling costs.
- Easy setting with just two steps. Customers can select sleep mode and rotation period.
- Power modules working in rotation, prolong the life time.



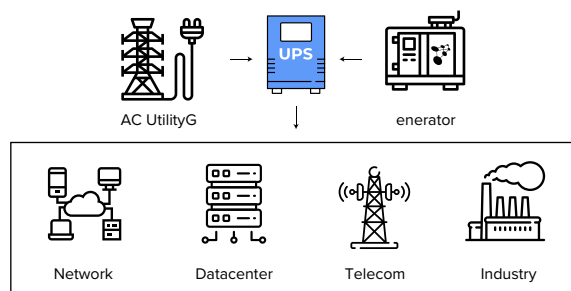
Fields of application

Its versatility and reliability make it an ideal UPS for small and medium datacenters, industrial processes, sensitive equipment in telecommunications networks and as a power supply to office equipment in medium and large companies.

Self-aging Mode

Self-aging is an advanced function applied in all three phase UPS, Self-aging function can test UPS under different load situation without real load, saving more than 90% of energy.

- Simulate different load conditions without connecting to any real load, saving 90% of energy.
- On site setting supported, easy for factory testing.



Technical specifications

MODEL	ATP-DM-050/10X	ATP-DM-030/10X	ATP-DM-020/10X	
Capacity	50kVA/50kW	30kVA/30kW	20kVA/20kW	
Power module	PD10X (10kVA/10kW)			
INPUT				
Phase	3 Wire + Neutral + Ground (208V/220V)			
Voltage range	187 ~ 260Vac (Line-Line), carga completa; 125V ~ 187Vac (Line-Line), carga reducida linealmente			
Frequency range	40Hz-70HZ			
Power factor	>0.99			
THDi	THDi<4% @ 100% linear load			
OUTPUT				
Voltage	208V/220V			
Voltage regulation	±1% for balance load; ±1.5% for unbalance load			
Power factor	1			
THDu	THD<1% (linear load), THD<5.5% (non-linear load)			
Crest factor	03:01			
Overload capability	110% for 10 min; 125% for 1 min; 150% for 30 s; >150% for 200ms			
BATTERY				
Voltage	±120VDC			
Charge power	20% *System Power			
Charge voltage precision	±1%			
SYSTEM				
System efficiency	Normal mode:93%; ECO mode:98%; Battery mode:92.5%			
Display	7.0" color touch screen LCD + LED + Keyboard			
IP class	IP20			
Interface	Standard: RS232, RS485, Dry contacts; Optional: SNMP			
Operation/Storage temperature	0-40°C/-40-70°C			
Relative humidity	0-95% (non-condensing)			
Noise	58dB @ full load. 52dB @ 45% load (1 meter away)			
PHYSICAL				
Weight (kg)	Cabinet	85	52	42
	Power Module	16		
Dimension (W*D*H) (mm)	Cabinet	485*751*1033	485 * 751 * 575 (11U)	485 * 697 * 398 (7U)
	Power Module	436 * 590 * 85 (2U)		

* Product specifications are subject to change without further notice.

