

Online single-phase UPS ATP One RT



Power: 1~3KVA, PF1
Input voltage: 120 Vac
Output voltage: 120 Vac



With true double conversion design, ATP-One RT series provides powerful and overall protection to your sensitive devices in harsh environments.



Operation panel

Displays information on the status of the UPS, input and output electrical parameters, charge percentage and backup time of the UPS system. Allows the selection of operating modes and configuration of equipment operating parameters.



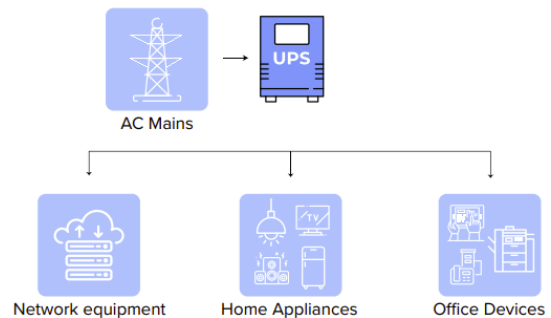
ATP One RT Features

- True double-conversion.
- Output power factor 1.
- Output voltage regulation < 1%.
- Higher output crest ratio 3:1.
- 50Hz/60Hz frequency converter mode.
- Programmable power management outlets.
- Emergency power off function (EPO).
- Hot swappable battery design.
- ECO mode energy saving.
- Provides over voltage cut-off protection and surge immunity by MOV for full time equipment protection.
- High power factor charger up to 8A capacity with very low ripple current when charging battery.
- Low input THDi to reduce power system pollution.
- Adjustable charging current via LCD panel.
- Smart battery charger design to optimize battery performance.

Application fields

Specially designed for the protection of sensitive equipment in general

- Network equipment
- Home appliances
- Office devices



Type of input and output connections for ATP One RT

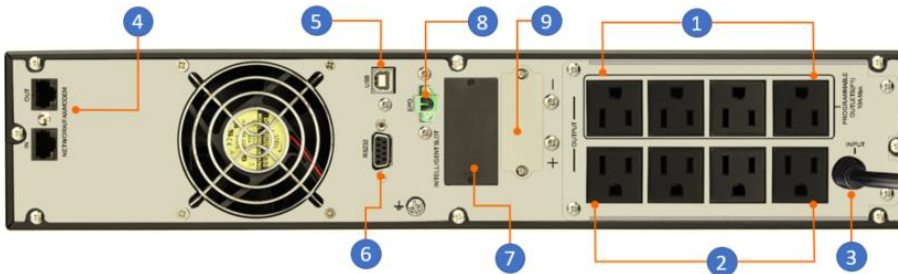
ATP One RT model	Input plug type	Output NEMA type	Output IEC type (option)
ATP One-1000RT	NEMA 5-15P 15A 125V	(4) 5-15R Protected outlets * (4) 5-15R Programmable outlets **	(4) C13 Protected outlets (4) C13 Programmable outlets
ATP One-1500RT	NEMA 5-15P 15A 125V	(4) 5-15R Protected outlets (4) 5-15R Programmable outlets	(4) C13 Protected outlets (4) C13 Programmable outlets
ATP One-2000RT	NEMA 5-20P 20A 125V	(4) 5-20R Protected outlets (4) 5-20R Programmable outlets	(4) C13 Protected outlets (4) C13 Programmable outlets
ATP One-3000RT	NEMA L5-30P 30A 125V	(4) 5-20R Protected outlets (4) 5-20R Programmable outlets (1) L5-30R Protected outlet	(4) C13 Protected outlets (4) C13 Programmable outlets (1) C19 Protected outlet
ATP One-3000RT (Tb)	Hardwired with terminals	(3) 5-20R Protected outlets (3) 5-20R Programmable outlets (1) Protected Terminal Block	(3) C13 Protected outlets (2) C13 Programmable outlets (1) Protected Terminal Block

(*) Protected outlets: Connect to mission-critical loads.

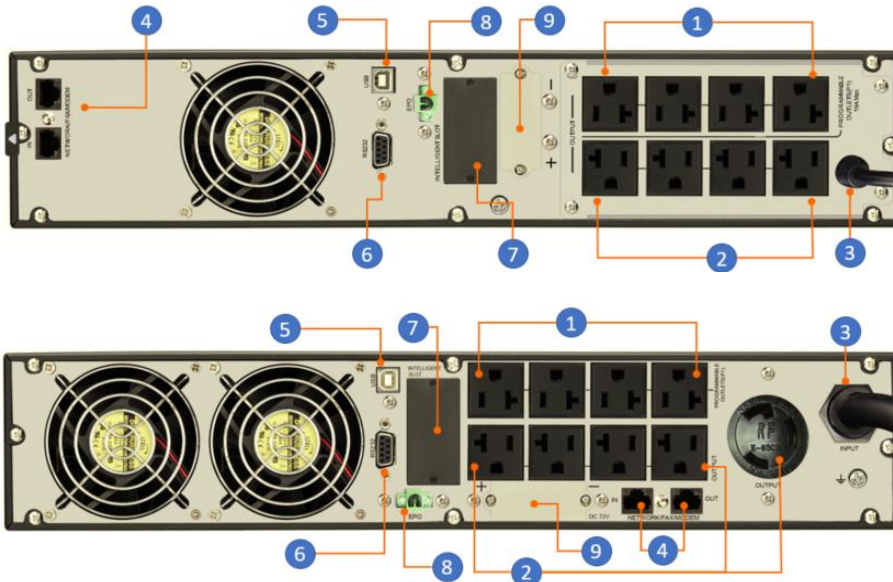
(**) Programmable outlets: Connect to non-critical loads.

UPS Back panel

ATP One RT 1KVA-1.5KVA



ATP One RT 2KVA



- 1) Programmable outlets: connect to non-critical loads.
- 2) Output receptacles: connect to mission-critical loads,
- 3) AC input
- 4) Network/Fax/Modem surge protection.
- 5) USB communication port.
- 6) RS-232 communication port.
- 7) SNMP intelligent slot.
- 8) Emergency power off (EPO) connector.
- 9) External battery connection

Connectivity options

 <p>WiFi Smart Card</p>	<p>WiFi Smart Card Wi-Fi Smart Card can enable wireless communication between On-Line UPS and monitoring platform. Users have complete and remote monitoring and controlling experience for UPS when combining Wi-Fi Smart Card with ViewPower APP, available for both iOS and Android based device.</p> <p>GPRS/3G Card Can collect the data from various device, and transmit data in GPRS or 3G system to data center. It's suitable for places where there is no access to Internet. The HTTP service of data center can manage and monitor several devices, and can record all data/events with in data center.</p>
 <p>SNMP Web Pro SNMP Web</p>	<p>SNMP Web Pro Card, SNMP Web Box Embedded with Web Server and installed with SNMP Web Manager, it provides real-time remote monitoring and controlling multiple UPSs from anywhere with internet access. Integrated with ViewPower Pro software, it can monitor and control a big-scale UPS monitoring system.</p>
 <p>Modbus Card</p>	<p>Modbus Card The Modbus card provides UPS the functionality of communication with PCs through MODBUS RTU protocol. When each UPS installed with one modbus card, up to 31 UPSs can be monitored from one computer.</p>
 <p>9-pin Port DB9 Port</p>	<p>Relay Card The AS400 communication card provides contact closures for remote monitoring UPS. To meet different application requirement, the AS400 card is capable of selection the status of the dry-contact signal (active close or active open) by setting jumper.</p>
 <p>EMD EMD</p>	<p>Environmental Monitoring Device (EMD) is used to remotely monitor temperature and humidity via SNMP manager. It also provides two dry contacts to receive signals from devices such as security and alarm system.</p>

Technical specifications

MODEL (UL model)	ATP One-1000RT 120 2B	ATP ONE-1500RT 120 3B	ATP ONE-2000RT 120 4B	ATP ONE-3000RT 120 6B (Tb)
CAPACITY*	1000VA/1000W	1500VA/1500W	2000VA/2000W	3000VA /3000W
INPUT				
Input voltage	100~127 VAC, 50/60Hz			
Voltage Range	Low Line Transfer	80VAC / 70VAC/ 60VAC / 55VAC ± 5 % (based on load percentage 100% - 80 % / 80 % - 70 % / 70 - 60 % / 60 % - 0)		
	Low Line Comeback	87VAC / 77VAC / 67VAC / 62VAC ± 5 %		
	High Line Transfer	150 VAC ± 5 %		
	High Line Comeback	145 VAC ± 5 %		
Frequency Range	40Hz ~ 70 Hz			
Phase	Single phase with ground			
Power Factor	≥ 0.99 @ full load			
THDI	≤ 5% @ 80~140Vac THDU < 1.6% @ input and full linear load condition			
OUTPUT				
Output voltage	100/110/115/120/125/127 VAC**			
AC Voltage Regulation	± 1% (Batt. Mode)			
Frequency Range (Synchronized Range)	47 ~ 53 Hz or 57 ~ 63 Hz			
Frequency Range	50 Hz ± 0.1 Hz or 60Hz ± 0.1 Hz (Batt. Mode)			
Current Crest Ratio	3:1			
Harmonic Distortion	≤ 2 % THD (Linear Load) ; 4 % THD (Non-linear Load)			
Transfer Time	AC Mode to Batt. Mode	Zero		
	Inverter to Bypass	< 4ms		
Waveform (Batt. Mode)	Pure Sinewave			
EFFICIENCY				
AC Mode	≥89% @ full charged battery		≥91% @ full charged battery	
ECO Mode	≥96% @ full charged battery			
Battery Mode	≥88%		≥90%	
BATTERY				
Battery Type	12V/9AH	12V/9AH	12V/9AH	12V/9AH
Quantities	2	3	4	6
Recharge Time	3 hours recover to 95% capacity for internal battery @ 2A charging current			
Charging Current	Default: 2A, Max: 8A adjustable			
Charging Voltage	27.4 VDC ± 1%	41.0 VDC ± 1%	54.7 VDC ± 1%	82.1 VDC ±1%
RUN TIME				
At 100% load	3min	3min	3min	3min
At 80% load	4min	4min	4min	4min
At 50% load	9min	9min	9min	9min
PHYSICAL				
Dimension, D X W X H (In)	16.14 x 17.24 x 3.46		20.08 x 17.24 x 3.46	
Net Weight (lb)	Without battery	14.55	17.86	20.72
	With battery	25.57	34.17	42.99
ENVIRONMENT				
Operation Humidity	20-95 % RH @ 32- 104°F (non-condensing)			
Noise Level	Less than 50dBA @ 3.28 feet (With fan speed control)			
MANAGEMENT				
Smart RS-232 or USB	Supports Windows® 2000/2003/XP/Vista/2008/7/8/10, Linux, Unix and MAC			
Optional SNMP	Power management from SNMP manager and web browser			
EMC/Safety	cTUVus (Compliant with UL 1778), RoHS Compliant			

* Derate capacity to 90% of capacity when the output voltage is adjusted to 100VAC.
Product specifications are subject to change without further notice.

